

Enz-Bulldozer

Here was carried out a successful improvement in channel and pipe cleaning.

The Enz-Bulldozer has a hydrostatic chamber, herewith reducing water turbulences and improving the flow dynamic to the ceramic inserts. The result is a compact, aggressive and most effective water jet not attained up to now. A forward jet, on all Enz-Bulldozer, clears the debris ahead of the advancing unit. If desired, the front-jet can be closed by a blind plug. Two additional nozzles, set slightly higher, clean the sides of the channel.

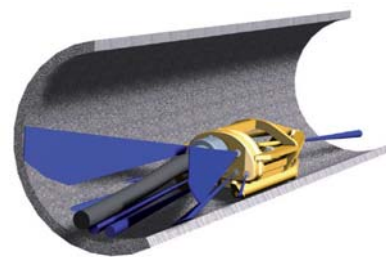
Characteristics

- enormous flushing capacity = reduced water consumption
- big water acceleration = superb flushing effect
- no swimming-up of the tool = very good cleaning of ground in channels with large water passage
- excellent gliding property: forwards and backwards thanks to the rounded skids and the front-jet

Applications

- The low and compact construction allows various uses in heavily polluted pipes

Working pressure up to 250 bar



Enz-Bulldozer

Enz-Bulldozer 3/4" - 1 1/2"



50.075

50.100G

	3/4
	200 - 500
	100
	4 × M10
	2 × FanJet M10
	1 × M10
	336 × 120 × 108
	10.00
	x

	1
	300 - 1000
	150
	6 × M10
	2 × FanJet M10
	1 × M10
	440 × 160 × 150
	24.00
	x



50.125A

50.150

	1 1/4
	400 - 2000
	300
	6 × M10
	2 × FanJet M10
	1 × M10
	530 × 200 × 180
	36.00
	x

	1 1/2
	500 - 4500
	400
	6 × M10
	2 × FanJet M10
	1 × M10
	550 × 230 × 200
	45.00
	x

Accessory and wearing parts



Spare skids

- 0050.07531** for Enz-Bulldozer 50.075 (left)
- 0050.07532** for Enz-Bulldozer 50.075 (right)
- 0050.100G** for Enz-Bulldozer 50.100G (left/right)
- 0050.12531** for Enz-Bulldozer 50.125A (left)
- 0050.12532** for Enz-Bulldozer 50.125A (right)
- 0050.15031** for Enz-Bulldozer 50.150 (left)
- 0050.15032** for Enz-Bulldozer 50.150 (right)

	Connecting thread ["]		Thrust jet		Weight [kg]
	Application range [mm]		Front jet		Recycling
	min. l/min at 100 bar		Length × Width × Height [mm]		