

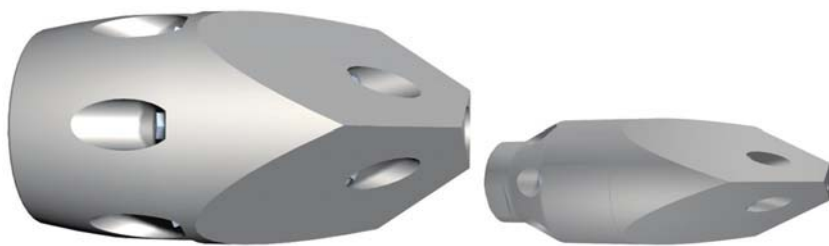
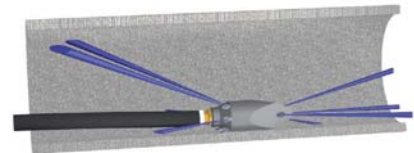
Pointed nozzles

Concentrated powerful advance by means of 4 front jet nozzles. The sharp edges cut, break and penetrate through every kind of blockage. Made of wear-resistant, hardened steel. All nozzles from art. 60.050 onward are provided with ceramic inserts. Because of this, the efficiency is considerably higher compared with those nozzles with drilled holes and the service life is several times longer.

Applications

- Penetrating of completely clogged pipes
- Opening of interlaced roots
- Opening of frozen pipelines
- Flushing out at hydraulic thrust boring

Working pressure up to 250 bar



Pointed nozzles

Pointed nozzles 1/8" - 1 1/4"



60.012SL15



60.025SL15

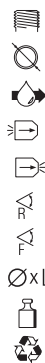


60.025SL30



60.038-30

60.038-60



	60.012SL15	60.025SL15	60.025SL30	60.038-30	60.038-60
Connecting thread ["]	1/8	1/4		3/8	
Application range [mm]	20 - 40	22 - 50		28 - 100	
min. l/min at 100 bar	15	20		30	61.3
Thrust jet	3 × Ø 0.95	3 × Ø 0.90	4 × Ø 1.35	3 × Ø 1.30	3 × Ø 1.50
Jet angle backward	4 × Ø 0.50	4 × Ø 0.60	4 × Ø 0.70	4 × M4	4 × M4
Jet angle forward	20°	20°		20°	
Measures [mm]	15°	15°		15°	
Weight [g]	16 × 25	19 × 33		25 × 45	
Recycling	20	30		70	
	—	—		—	



60.050



61.0504










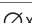


61.050

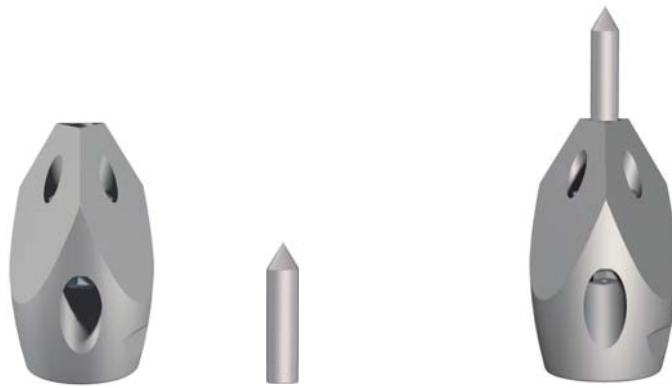


	60.050	61.0504	61.050
Connecting thread ["]	1/2		1/2
Application range [mm]	40 - 150		40 - 150
min. l/min at 100 bar	50		50
Thrust jet	3 × M6		3 × M6
Jet angle backward	4 × M4		3 × M4
Jet angle forward	20°		20°
Measures [mm]	15°		15°
Weight [g]	31 × 55		31 × 55
Recycling	140		140
	x		x

High Performance Tool  **enz golden jet®**

	Connecting thread ["]		Front jet		Weight [g]
	Application range [mm]		Jet angle backward		Recycling
	min. l/min at 100 bar		Jet angle forward		
	Thrust jet		Measures [mm]		

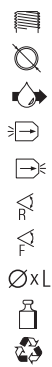
Pointed nozzles



60.075

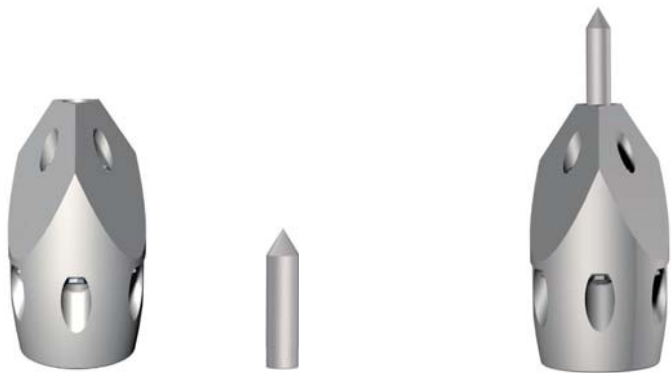
61.0504

61.075



3/4
60 - 250
100
3 × M6
4 × M4
20°
15°
38 × 80
320
x

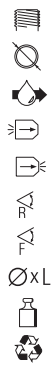
3/4
60 - 250
100
3 × M6
3 × M4
20°
15°
38 × 80
320
x



60.100

61.1004

61.100



1
100 - 300
150
6 × M6
4 × M6
20°
15°
48 × 90
505
x

1
100 - 300
150
6 × M6
3 × M6
20°
15°
48 × 90
505
x

	Connecting thread ["]		Front jet		Weight [kg]
	Application range [mm]		Jet angle backward		Recycling
	min. l/min at 100 bar		Jet angle forward		
	Thrust jet		Measures [mm]		

Pointed nozzles



60.100L

60.100L80

60.125



1
150 - 400
200
6 × M10
3 × M8
1 × M6
20°
15°
68 × 185
2.60
x

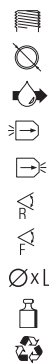
1
150 - 500
200
5 × M10
4 × M8
10° + (30° blind)
15°
79 × 218
4.68
x

1 1/4
150 - 400
200
6 × M6
4 × M6
20°
15°
58 × 100
0.83
x



60.125L

60.1254



1 1/4
200 - 800
200
5 × M10
4 × M8
10° + (30° blind)
15°
98 × 258
8.30
x