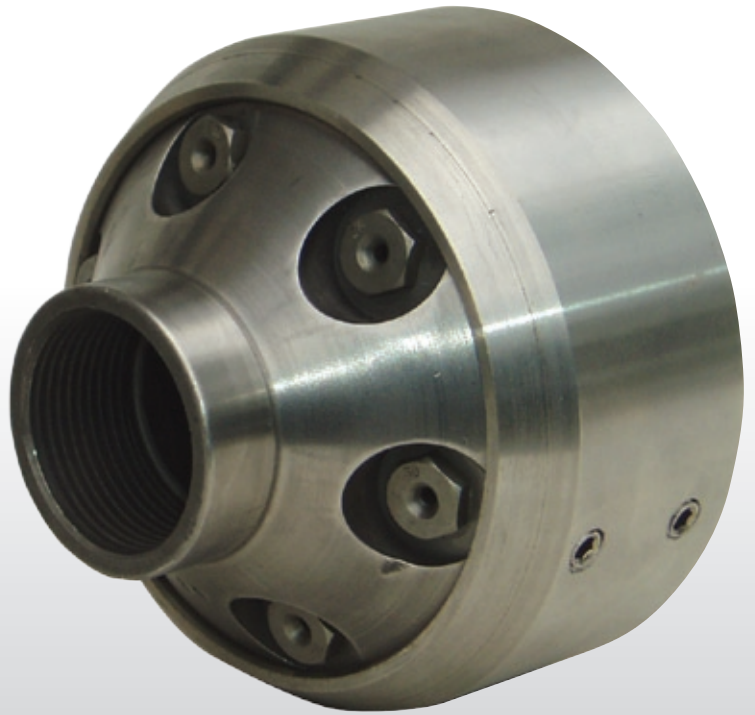




AquaTeq™



BL Missile™ is developed to be used without a sled, and is the obvious complement to the Jaws Nozzle.

BL MISSILE™

In the Predator series of nozzles you also will find the BL Missile™, developed to be used without a sled. The request came from customers in South America with the problem of small pipes filled with grease. They needed a compact nozzle with optimal pull and thrusting power but with a design preventing the nozzle from getting stuck.

BL Missile™ is now the obvious complement to the Jaws™ nozzle. To open up any obstacles the BL Missile™ is supplied with one penetrating forward jet. To give maximum service lifetime the BL Missile™ is also supplied with a replaceable wear body.

Characteristics

- Quality stainless steel construction.
- Variable jet sizes to accommodate flows from 100 up to 1000 l/min (25-265 US GPM).
- Looping the water around for a powerful water stream.
- Low angle jet streams, attack debris at its weakest point with superior performance.
- Construction made to help prevent nozzle from "getting stuck".
- Front jet
- Replaceable wear body



Specifications	
Hose size	3/4" up to 1 1/4"
Water flow	100 – 1000 l/min (25-265 US GPM)
Pipe dimension	Ø 150 and up (6" and up)
No. of jets	6 + 1
Jet size	1,9 up to 6,0 mm
Weight without wear body	3,0 kg (6,6 Lbs.)
Weight with wear body	4,4 kg (9,7 Lbs.)
Length	130 mm (5,1")
Diameter without wear body	98 mm (3,9")
Diameter with wear body	120 mm (4,7")

Note: Weights and dimensions are approximate and subject to change without notice.

Art no.	Description
BLM-25	BL Missile™ incl. 6 rear jets & 1 forward jet. Connection 1" BSP female thread.
BLMWB-25	BL Missile™ incl. 6 rear jets, 1 forward jet & 1 mounted wear body. Connection 1" BSP female thread.
BLM-32	BL Missile™ incl. 6 rear jets & 1 forward jet. Connection 1 1/4" BSP female thread.
BLMWB-32	BL Missile™ incl. 6 rear jets, 1 forward jet & 1 mounted wear body. Connection 1 1/4" BSP female thread.