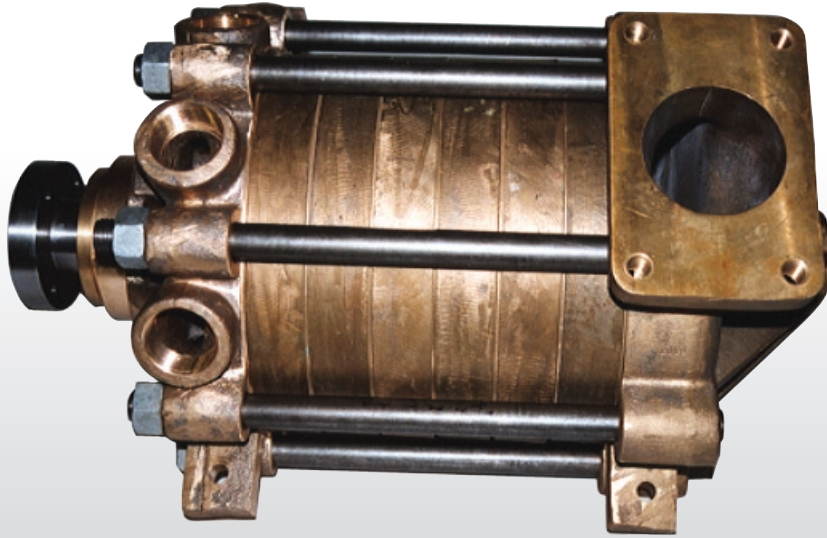




AquaTeq



The **Poseidon** pump is a special developed seven-stage centrifugal pump.

Poseidon

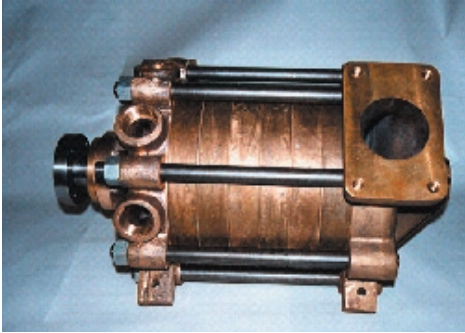
Background

We have developed the Poseidon pump together with W. Ruberg, a well-known and respected manufacturer of fire pumps. The first pump produced was mounted on our own jetting unit 1974. The development of the Poseidon pump started with a high pressure section from a fire pump and has since been developed into a separate pump that can supply larger volumes of water and much higher pressure than the original.

The development of the Poseidon pump is based on our customers request off a pump that is able to supply a large amount of water per minute at a fair pressure. Through studies and field tests we have performed

in co-operation with the Swedish Water and Sewage Works' Ass., it has been established to be the most efficient way to clean sewer and storm drains. At pressures higher then approx. 60 bars (900 PSI) the water turn from a well gather into water drops. As the pressure increases it finally turns into mist and mist does not clean pipes very effectively.

The Poseidon pump is mainly used for cleaning sanitary sewers, industrial and storm drains.



POSEIDON- FLUSH PUMP

- The Poseidon pump is a special developed seven-stage centrifugal pump.
- The pump is designed to supply variable flows up to 900 LPM (235 US GPM) at a maximum pressure of 120 bars (1750 PSI).
- The materials chosen and the design are made to give the best performance.
- Due to the selection of the material the Poseidon pump can pump sea water.
- The pump can run dry since the pump parts can tolerate rather high temperatures.



POSEIDON JETTING UNITS

- We design and build Poseidon units in accordance with your needs.
- The Poseidon pump can also be mounted on a combination truck using the chassis PTO and a special developed gearbox.