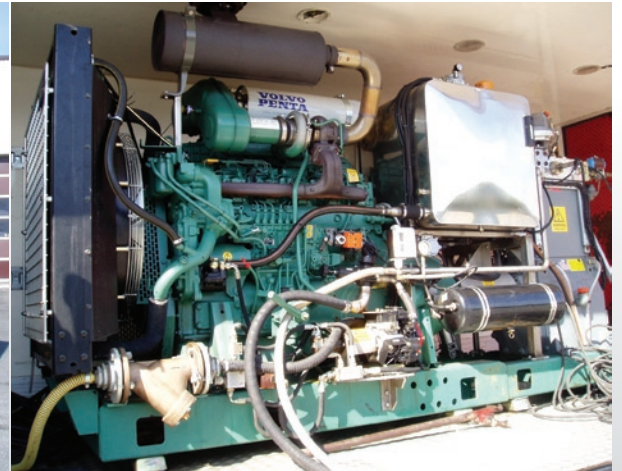




# AquaTeq



The ultra high pressure unit we at AquaTeq delivered has a flow of 93 l/min (25 US GPM) at a pressure of 800 bars (11 600 PSI).

## Ultra high pressure unit

### Background

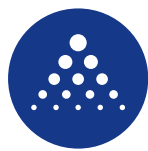
If you have a problem we are pleased to find the solution. One example is the unit company Pettersen & Pinderød from Norway asked us to design and construct. They had a need of a special unit that could supply 90 liters per minute (24 US GPM) at 800 bars of pressure (approx. 12 000 PSI). Standard units normally supply “only” 50 liters per minute (13 US GPM) at the same pressure. Pettersen & Pinderød needed the unit for the task to remove grease deposits in dairy tanks. The deposits can grown 1” thick and have asphalt consistency.

The ultra high pressure unit we at AquaTeq delivered has a flow of 93 l/min (25 US GPM) at a pressure of 800 bars (11 600 PSI). The unit is pre-programmed with a number of pressure levels with adapted water flow for optimal cleaning function. The operators control the unit through a handle on the high pressure gun. When the handle is pushed in the unit will deliver re-programmed pressure and flow. When the handle is released the engine goes down on idle speed and the water flow stop.

**AquaTeq Sweden AB** ADDRESS Kalmar Tech Park, SE-393 56 KALMAR

PHONE +46 (0)480 270 10 FAX +46 (0)480 125 80

EMAIL [info@aquateq.se](mailto:info@aquateq.se) HOMEPAGE [www.aquateq.com](http://www.aquateq.com)



# AquaTeq



Characteristics	
Motor:	Vovo Penta TWD 1031 VE
Water pump	URACA KD 724-G
Flow:	93 (l/min)
Pressure:	800 bar
Misc. info:	Combined tank for diesel and Hydraulic oil. Motor guard. Pressure guard. Emergency stop.